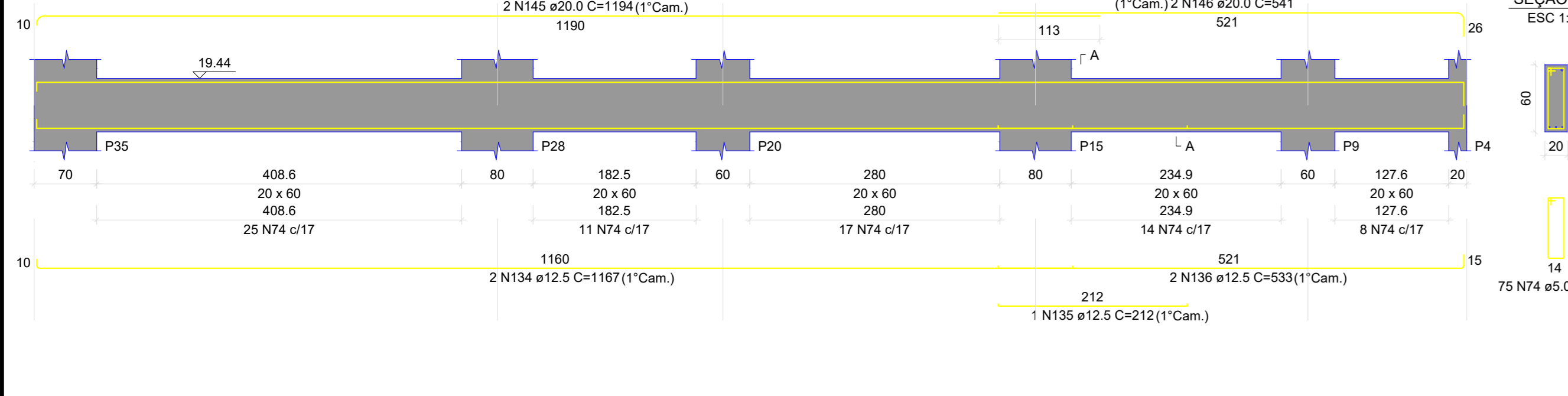


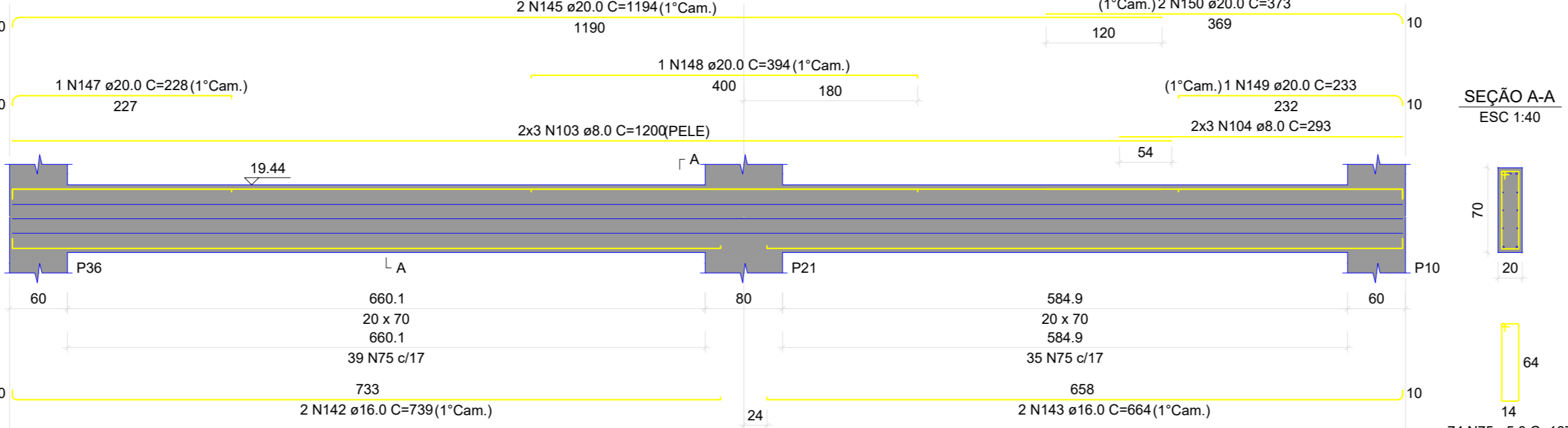
V324

ESC 1:50



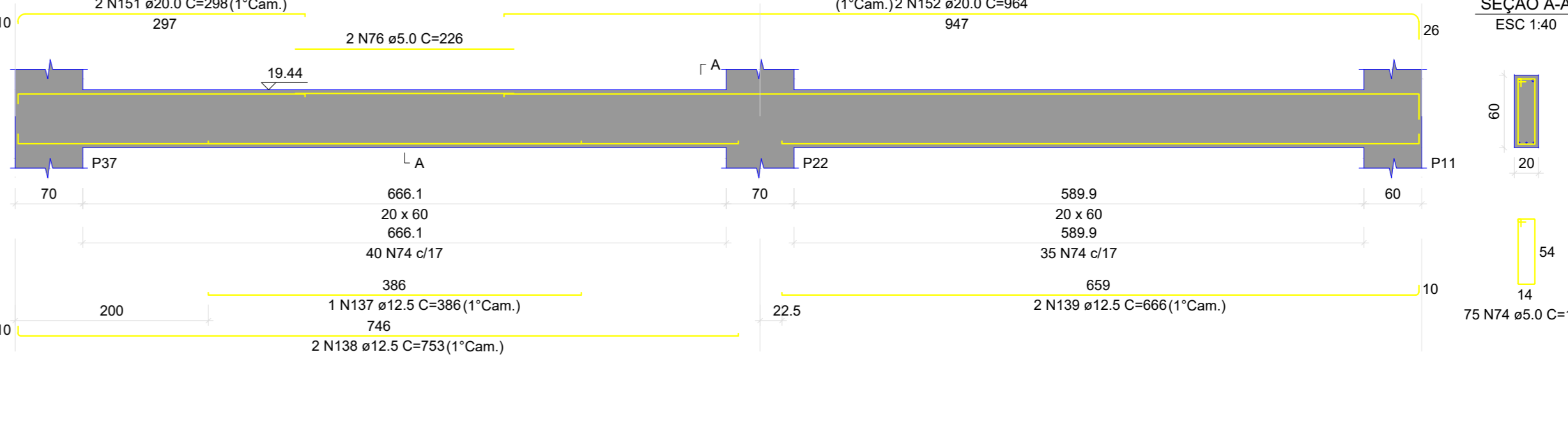
V325

ESC 1:50



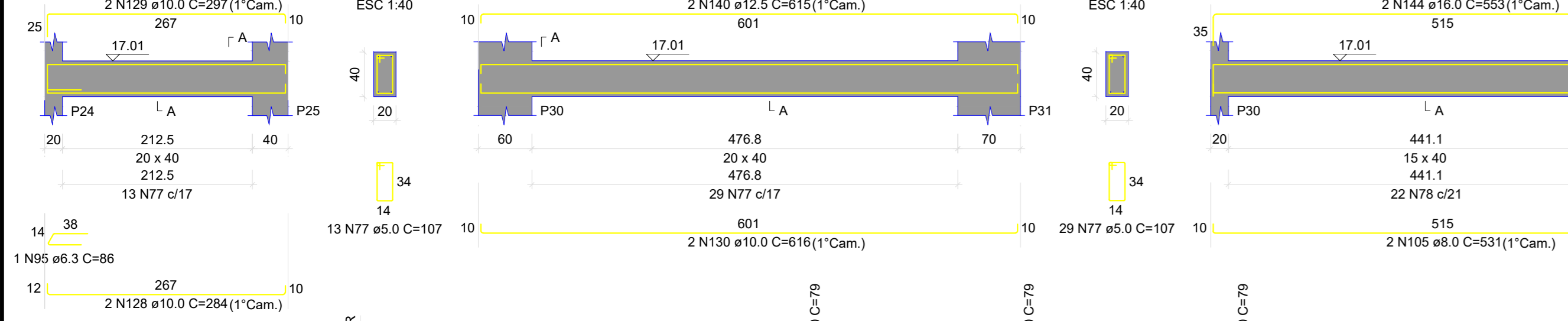
V326

ESC 1:50



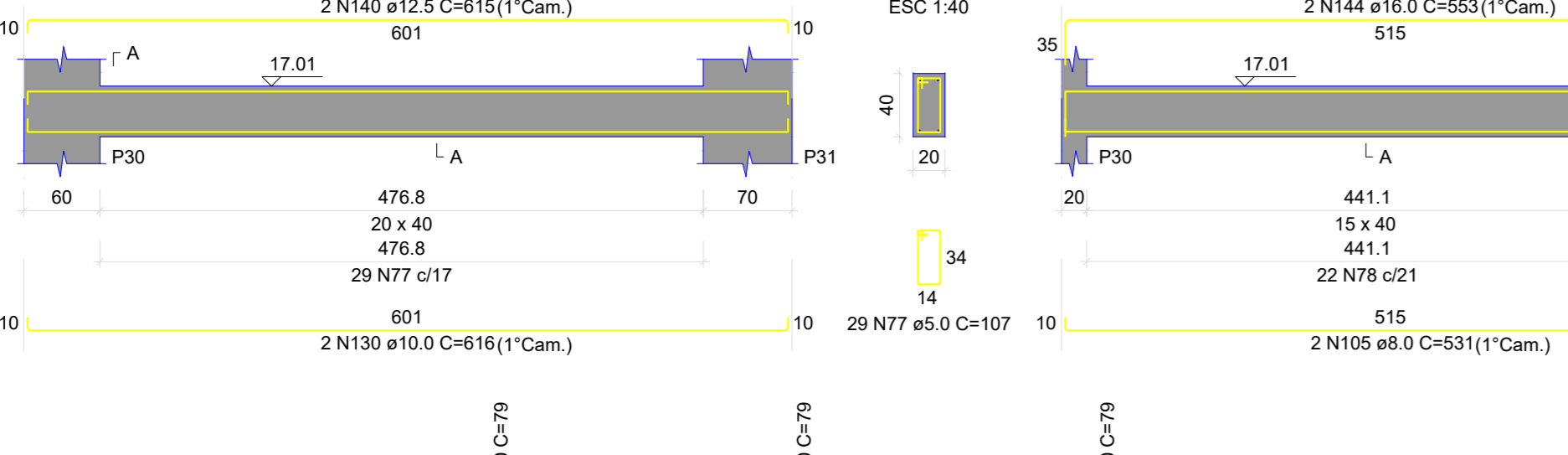
V327

ESC 1:50



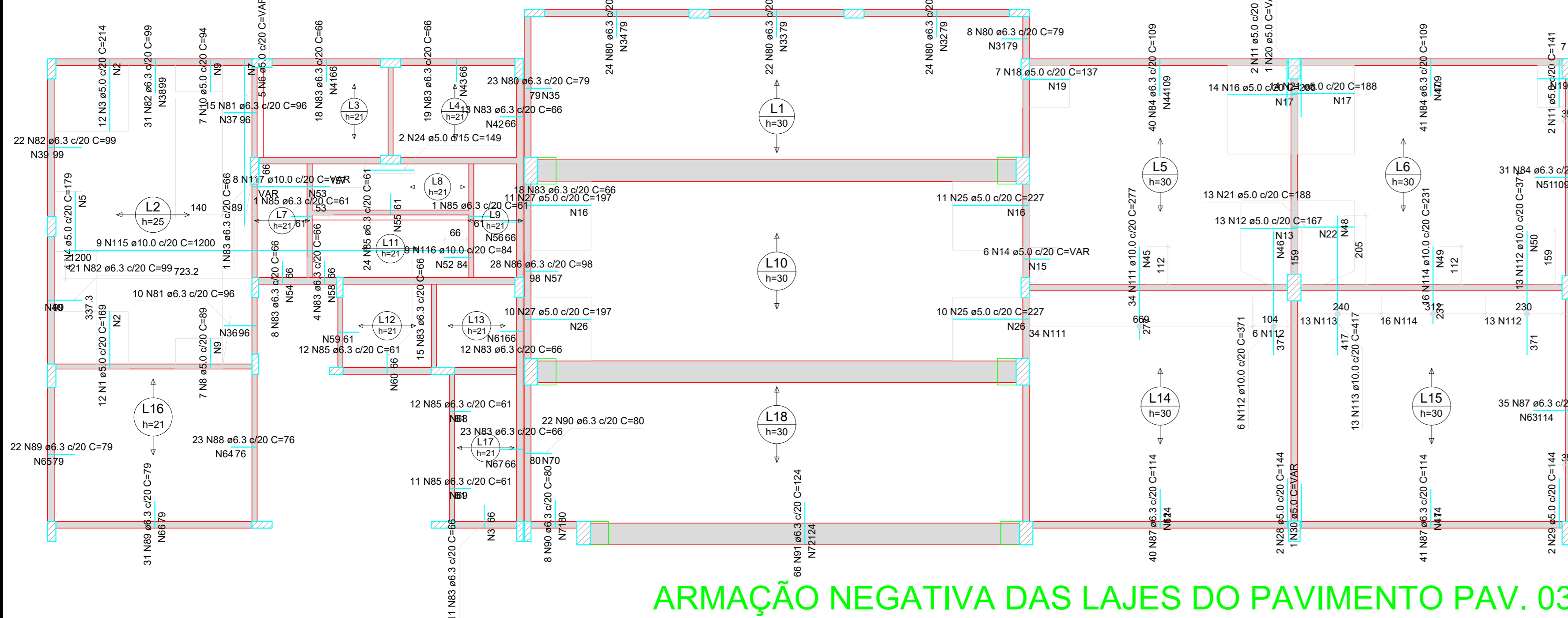
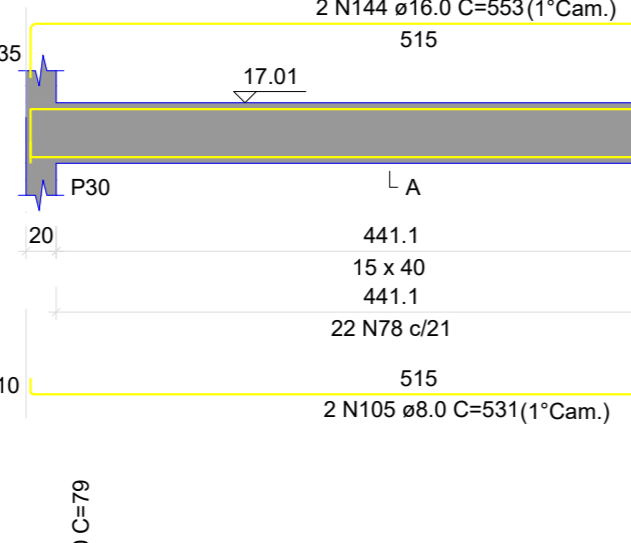
V328

ESC 1:50



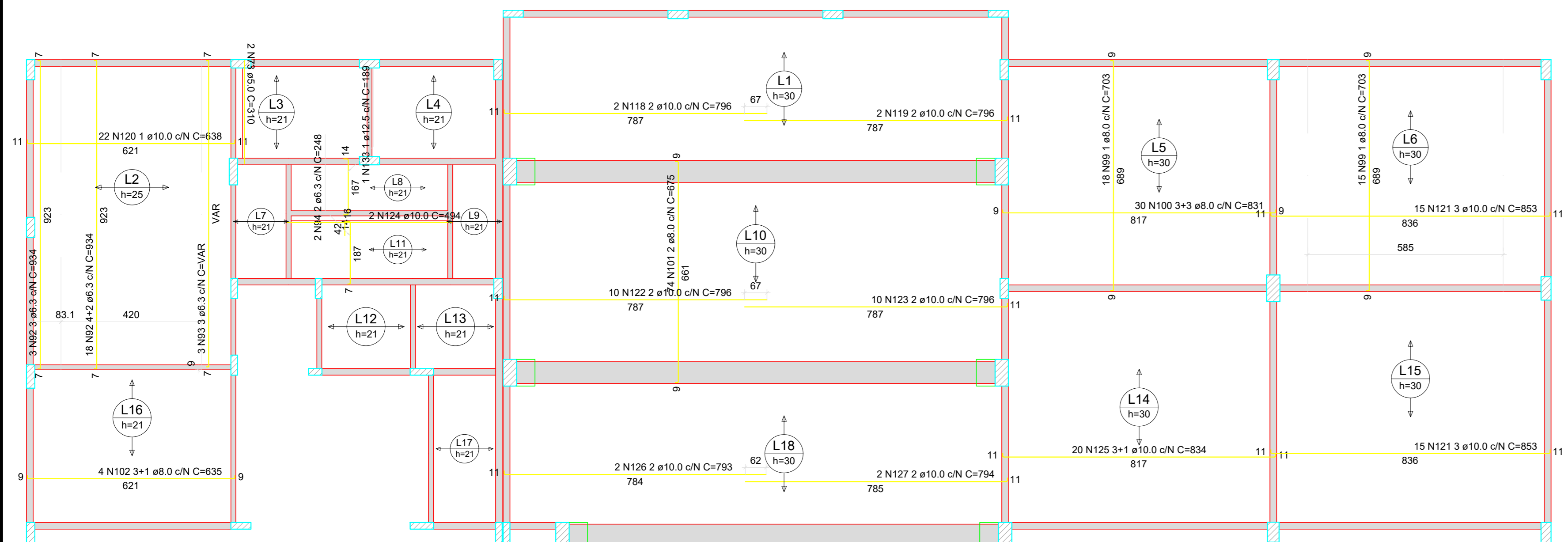
V329

ESC 1:50



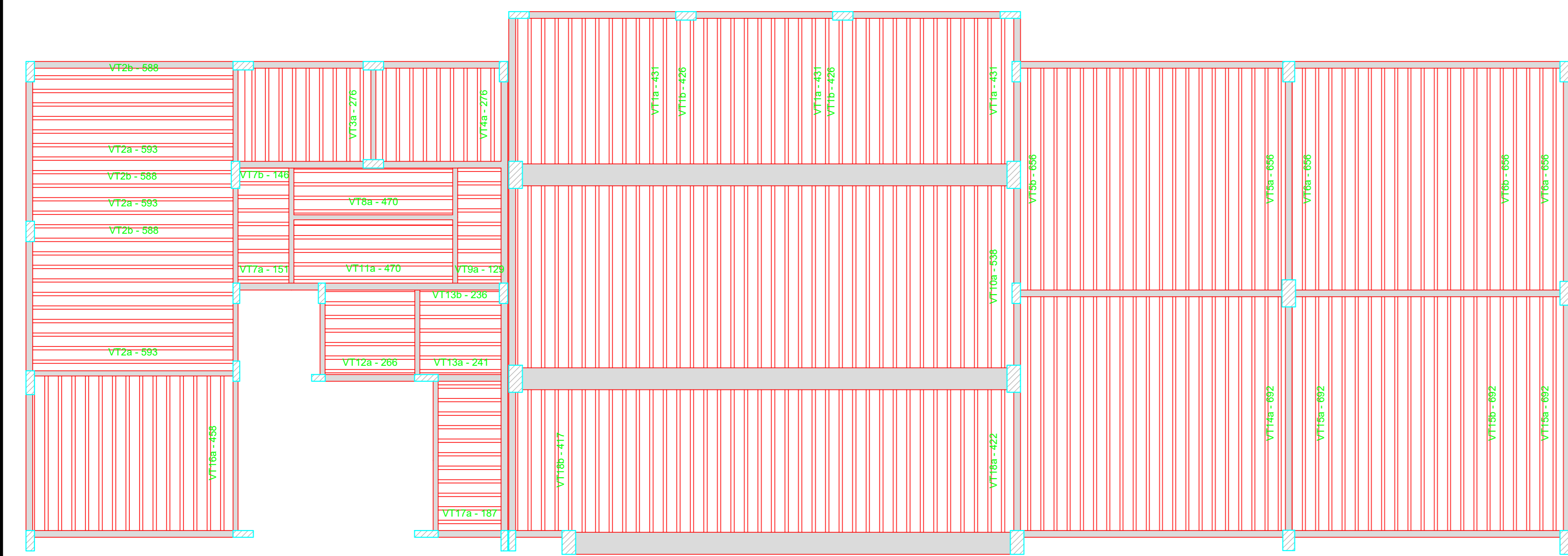
ARMAÇÃO NEGATIVA DAS LAJES DO PAVIMENTO PAV. 03

Escala 1:100



ARMAÇÃO POSITIVA DAS LAJES DO PAVIMENTO PAV. 03

Escala 1:100

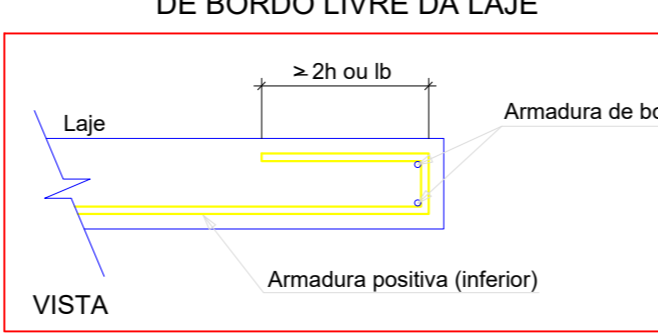


PLANTA DE VIGOTAS PRÉ-MOLDADAS

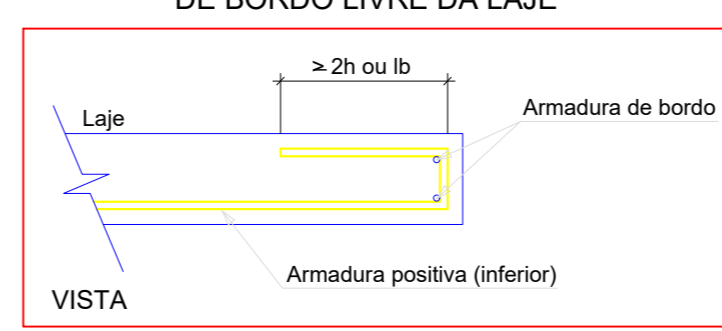
Escala 1:100

Armaduras de distribuição	Armadura de distribuição
N1	9 N2 a5.0 c20 C=223
N3	11 N2 a5.0 c20 C=223
N4	9 N3 a5.0 c20 C=78
N6	25 N7 a5.0 c20 C=VAR
N8	5 N9 a5.0 c20 C=140
N10	5 N9 a5.0 c20 C=140
N12	9 N13 a5.0 c20 C=200
N14	4 N15 a5.0 c20 C=VAR
N16	11 N17 a5.0 c20 C=265
N18	7 N19 a5.0 c20 C=125
N21	10 N22 a5.0 c20 C=236
N23	5 N18 a5.0 c20 C=125
N21	10 N17 a5.0 c20 C=265
N23	12 N26 a5.0 c20 C=191
N27	10 N28 a5.0 c20 C=191
N25	12 N16 a5.0 c20 C=206
N27	10 N16 a5.0 c20 C=206
N80	4 N31 a5.0 c20 C=196
N80	4 N32 a5.0 c20 C=478
N80	4 N33 a5.0 c20 C=446
N80	4 N34 a5.0 c20 C=475
N80	4 N35 a5.0 c20 C=460
N81	5 N36 a5.0 c20 C=200
N81	5 N37 a5.0 c20 C=207
N82	5 N38 a5.0 c20 C=201
N82	5 N39 a5.0 c20 C=442
N82	5 N40 a5.0 c20 C=412
N83	4 N41 a5.0 c20 C=367
N83	4 N42 a5.0 c20 C=203
N84	4 N43 a5.0 c20 C=376
N84	6 N44 a5.0 c20 C=896
N84	14 N45 a5.0 c20 C=879
N112	19 N46 a5.0 c20 C=124
N112	6 N47 a5.0 c20 C=817
N114	12 N48 a5.0 c20 C=280
N112	19 N50 a5.0 c20 C=251
N84	6 N51 a5.0 c20 C=626
N115	6 N52 a5.0 c20 C=182
N117	12 N53 a5.0 c20 C=VAR
N83	4 N54 a5.0 c20 C=163
N85	3 N55 a5.0 c20 C=484
N83	4 N56 a5.0 c20 C=368
N86	5 N57 a5.0 c20 C=559
N83	4 N58 a5.0 c20 C=90
N85	3 N59 a5.0 c20 C=252
N83	4 N60 a5.0 c20 C=294
N83	4 N61 a5.0 c20 C=238
N87	6 N62 a5.0 c20 C=803
N87	6 N47 a5.0 c20 C=817
N87	6 N63 a5.0 c20 C=702
N88	4 N64 a5.0 c20 C=466
N89	4 N65 a5.0 c20 C=432
N89	4 N66 a5.0 c20 C=618
N83	4 N67 a5.0 c20 C=469
N85	3 N68 a5.0 c20 C=243
N85	3 N69 a5.0 c20 C=218
N83	4 N3 a5.0 c20 C=214
N90	4 N70 a5.0 c20 C=445
N90	4 N71 a5.0 c20 C=185
N91	7 N72 a5.0 c20 C=1322

DETALHE DA ARMADURA DE BORDO LIVRE DA LAJE

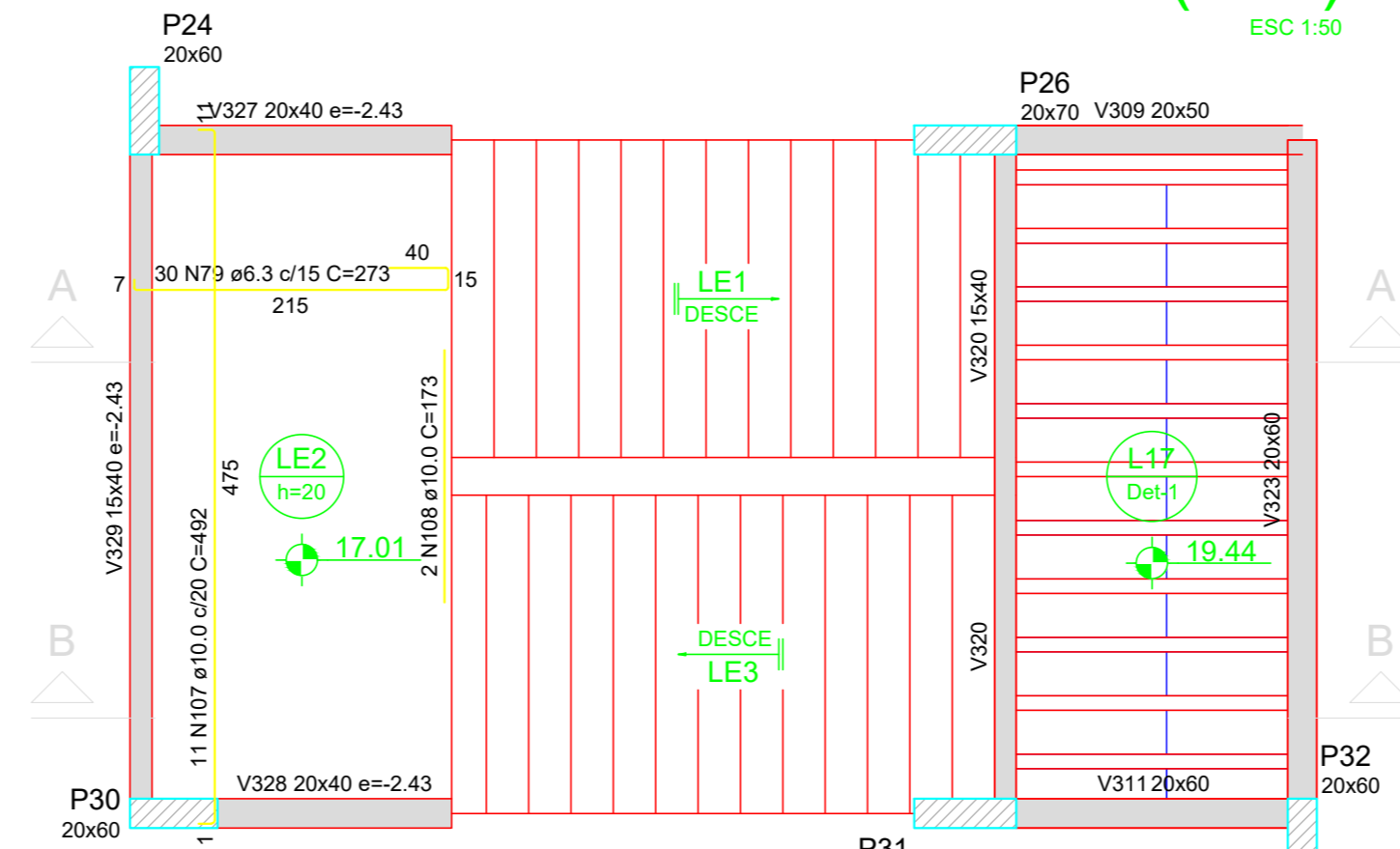


DETALHE DA ARMADURA DE BORDO LIVRE DA LAJE



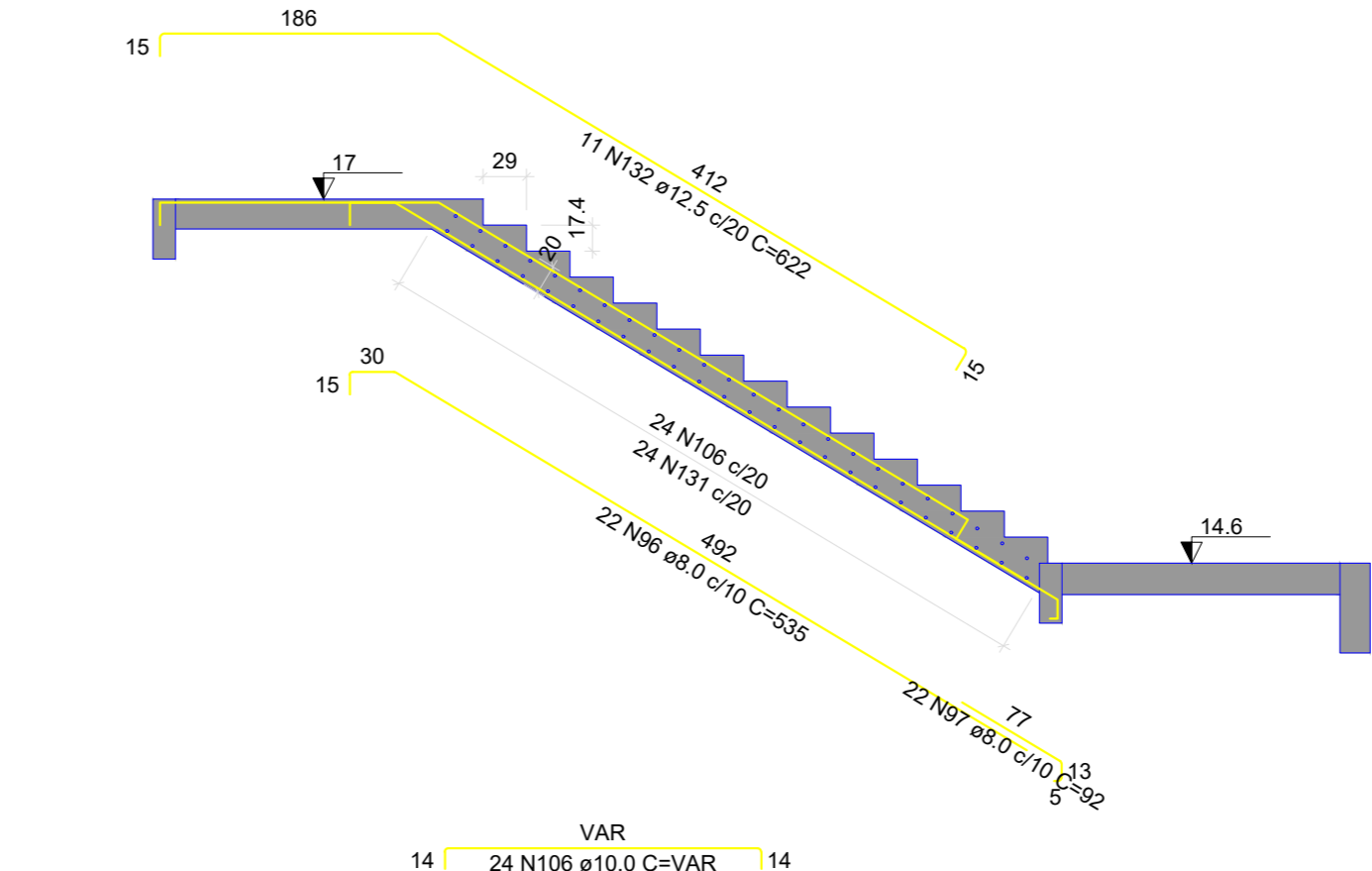
CORTE B-B (LE3)

ESC 1:50



CORTE A-A (LE1)

ESC 1:50



ACO	N	DIAM (mm)	C. UNIT (cm)	C. TOTAL (cm)
CABO	1	5.0	12	2028
	2	5.0	20	4460
	3	5.0	18	214
	4	5.0	4	3424
	5	5.0	9	78
	6	5.0	3	VAR
	7	5.0	25	VAR
	8	5.0	10	94
	9	5.0	10	140
	10	5.0	10	140
	11	5.0	4	141
	12	5.0	13	171
	13	5.0	9	250
	14	5.0	6	VAR
	15	5.0	4	VAR
	16	5.0	2	VAR
	17	5.0	21	265
	18	5.0	7	101
	19	5.0	12	125
	20	5.0	12	125
	21	5.0	27	188
	22	5.0	10	38
	23	5.0	7	707
	24	5.0	7	101
	25	5.0	21	227
	26	5.0	22	191
	27	5.0	21	227
	28	5.0	21	197
	29	5.0	21	197
	30	5.0	21	197
	31	5.0	21	197
	32	5.0	21	197
	33	5.0	21	197
	34	5.0	21	197
	35	5.0	21	197
	36	5.0	21	197
	37	5.0	21	197
	38	5.0	21	197
	39	5.0	21	197
	40	5.0	21	197
	41	5.0	21	197
	42	5.0	21	197
	43	5.0	21	197
	44	5.0	21	197
	45	5.0	21	197
	46	5.0	21	197
	47	5.0	21	197
	48	5.0	21	197
	49	5.0	21	197
	50	5.0	21	197
	51	5.0	21	197
	52	5.0	21	197
	53	5.0	21	197
	54	5.0	21	197
	55	5.0	21	197
	56	5.0	21	197
	57	5.0	21	197
	58	5.0	21	197
	59	5.0	21	197
	60	5.0	21	197
	61	5.0	21	197
	62	5.0	21	197
	63	5.0	21	197
	64	5.0	21	197
	65	5.0	21	197
	66	5.0	21	197
	67	5.0	21	197
	68	5.0	21	197
	69	5.0	21	197
	70	5.0	21	197
	71	5.0	21	197
	72	5.0	21	197
	73	5.0	21	197
	74	5.0	21	197
	75	5.0	21	197
	76	5.0	21	197
	77	5.0	21	197
	78	5.0	21	197
	79	5.0	21	197
	80	5.0	21	197
	81	5.0	21	197
	82	5.0	21	197
	83	5.0	21	197
	84	5.0	21	197
	85	5.0	21	197
	86	5.0	21	197
	87	5.0	21	197
	88	5.0	21	197
	89	5.0	21	197
	90	5.0	21	197
	91	5.0	21	197
	92	5.0	21	197
	93	5.0	21	197
	94	5.0	21	197
	95	5.0	21	197
	96	5.0	21	197
	97	5.0	21	197
	98	5.0	21	197
	99	5.0	21	197
	100	5.0	21	197

ACO	DIAM (mm)	C.TOTAL (m)	QUANT + 0% (Barras)	PESO + 0% (kg)
CABO	5.0	2217.7	185	341.8

Volume de concreto (C-30) = 75.42 m³
Área de forma = 91.05 m²

HISTÓRICO DE REVISÕES/ADEQUAÇÕES

Nº da revisão	Descrição	Responsável	Data
RE00	Entrega inicial dos Projetos	Eng. Lucas	29/07/2025
RE01	Revisão detalhamento de escadas/ quadro de resumo de aço de paredes de concreto	Eng. Lucas	22/09/2025